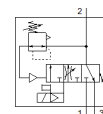
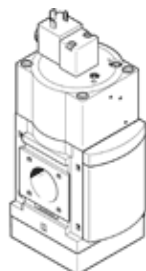


soft-start/quick exhaust valve MS9-SV-G-C-V24-S-VS

Part number: 570737

FESTO

For the soft-start and quick exhaust of system components.



Data sheet

Feature	Value
Series	MS
Size	9
Grid dimension	90 mm
Safety function	Exhausting
Performance level (PL)	Exhausting / up to Category 1, Performance Level c
Design structure	Piston slide
Type of actuation	electrical
Sealing principle	soft
Exhaust-air function	not throttleable
Manual override	None
Type of reset	mechanical spring
Type of piloting	Piloted
Valve function	3/2 closed, monostable Pressure build-up function
Operating pressure	3.5 ... 16 bar
Standard nominal flow rate	8,300 ... 16,550 l/min
Standard flow rate for exhaust 6->0 bar	19,730 ... 21,720 l/min
Duty cycle	100 %
Characteristic coil data	24 V DC: 8.4 W
Permissible voltage fluctuation	+/- 10 %
Operating medium	Compressed air in accordance with ISO8573-1:2010 [7:4:4]
Note on operating and pilot medium	Lubricated operation possible (subsequently required for further operation)
Corrosion resistance classification CRC	2 - Moderate corrosion stress
Materials note	Conforms to RoHS
Sound pressure level	93 dB(A)
Protection class	IP65
Medium temperature	0 ... 60 °C
Ambient temperature	0 ... 60 °C
Storage temperature	0 ... 60 °C
Shock resistance	Shock test with severity level 1 in accordance with FN 942017-5 and EN 60068-2-27
Vibration resistance	Transport application test at severity level 1 in accordance with FN 942017-4 and EN 60068-2-6
Mounting type	Line installation with accessories Optional
Assembly position	Any
Product weight	3,200 g
Pressure gauge connection	G1/4 G1/8
Pneumatic connection, port 3	G1 1 NPT
Electrical connection	Plug pattern type A to EN 175301-803

Feature	Value
	Plug to EN 175301-803 Cubic design
Material housing	Aluminium die cast
Material seals	NBR
Material Piston slide	Brass
Material cover	Wrought Aluminium alloy
Material underneath cover	PA