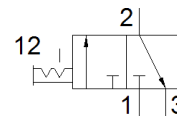
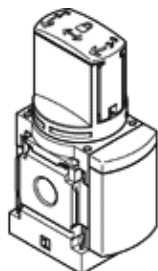


# on-off valve MS6-EM1-3/8

Part number: 541275

FESTO

Manual, direction of flow: from left to right.



## Data sheet

Feature	Value
Design structure	Rotary slide valve
Type of actuation	manual
Exhaust-air function	not throttleable
Type of piloting	direct
Valve function	3/2 bistable
Operating pressure	0 ... 18 bar
C value	21.2 l/sbar
b value	0.49
Standard nominal flow rate	5,500 l/min
Operating medium	Compressed air in accordance with ISO8573-1:2010 [7:4:4] Inert gases
Note on operating and pilot medium	Lubricated operation possible (subsequently required for further operation)
Corrosion resistance classification CRC	2 - Moderate corrosion stress
Materials note	Free of copper and PTFE Conforms to RoHS
Medium temperature	-10 ... 60 °C
Ambient temperature	-10 ... 60 °C
Food-safe	See Supplementary material information
Mounting type	Line installation with accessories Optional
Assembly position	Any
Flow direction	non reversible
Product weight	580 g
Pneumatic connection, port 1	G3/8
Pneumatic connection, port 2	G3/8
Pneumatic connection, port 3	G1/2
Material seals	TPE-U(PU)
Material housing	Aluminium die cast