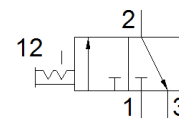
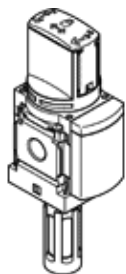


on-off valve MS4-EM1-1/4-S-Z

Part number: 541260

FESTO

Manual, with silencer, direction of flow: from right to left.



Data sheet

Feature	Value
Design structure	Rotary slide valve
Type of actuation	manual
Exhaust-air function	not throttleable
Type of piloting	direct
Valve function	3/2 bistable
Operating pressure	0 ... 14 bar
C value	9 l/sbar
b value	0.39
Standard nominal flow rate	2,200 l/min
Operating medium	Compressed air in accordance with ISO8573-1:2010 [7:4:4] Inert gases
Note on operating and pilot medium	Lubricated operation possible (subsequently required for further operation)
Corrosion resistance classification CRC	2 - Moderate corrosion stress
Materials note	Free of copper and PTFE Conforms to RoHS
Medium temperature	-10 ... 60 °C
Ambient temperature	-10 ... 60 °C
Food-safe	See Supplementary material information
Mounting type	Line installation with accessories Optional
Assembly position	Any
Flow direction	non reversible
Product weight	210 g
Pneumatic connection, port 1	G1/4
Pneumatic connection, port 2	G1/4
Pneumatic connection, port 3	Non-ducted
Material seals	TPE-U(PU)
Material housing	Aluminium die cast